

YOU'RE OFF TO VISIT YOUR MUM.

You'll know you're nearly there when you see a sign and then you'll go up the long driveway.

After parking you'll go through some gates to the reception. The person at the counter will ask who you're visiting. They'll then make a call to let your Mum know you've arrived.

At every visit, you'll need to bring the letter stating that you are allowed to visit.



WHO DID
YOU
HELP
TODAY?

Trust (registered charity CC53191)

**Mothers
Project**



**CHRISTCHURCH
AIRPORT**



**DEPARTMENT OF
CORRECTIONS**
ARA POUTAMA AOTEAROA

This information has been approved by the Department of Corrections.

Visiting Mum

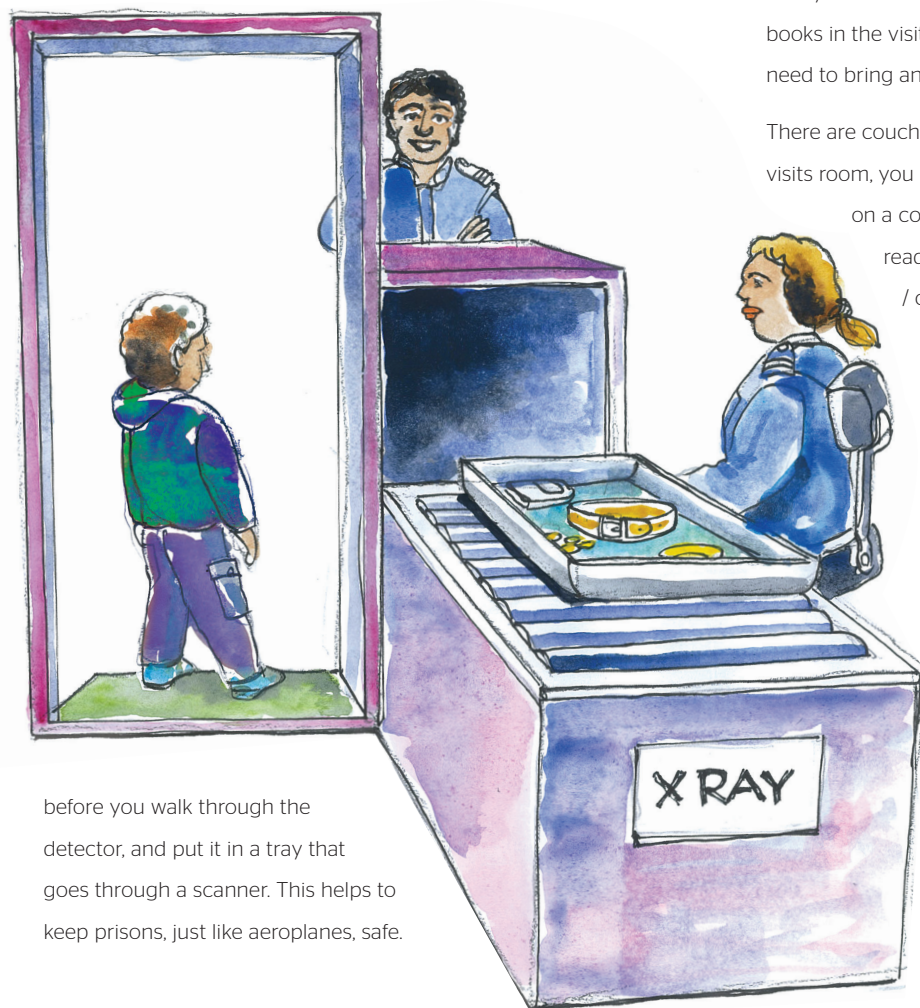
at Christchurch
Women's Prison



This brochure was brought to you by **Mothers
Project**

You'll be asked to leave any stuff that isn't needed for your visit. So if you've got a jacket, soft toy, or books, you'll be told where to put them. You'll pick them up on your way out.

You'll then go through a metal detector, like the ones they have at airports. If you've got any metal on you (maybe on a belt or watch), you'll need to take it off



before you walk through the detector, and put it in a tray that goes through a scanner. This helps to keep prisons, just like aeroplanes, safe.

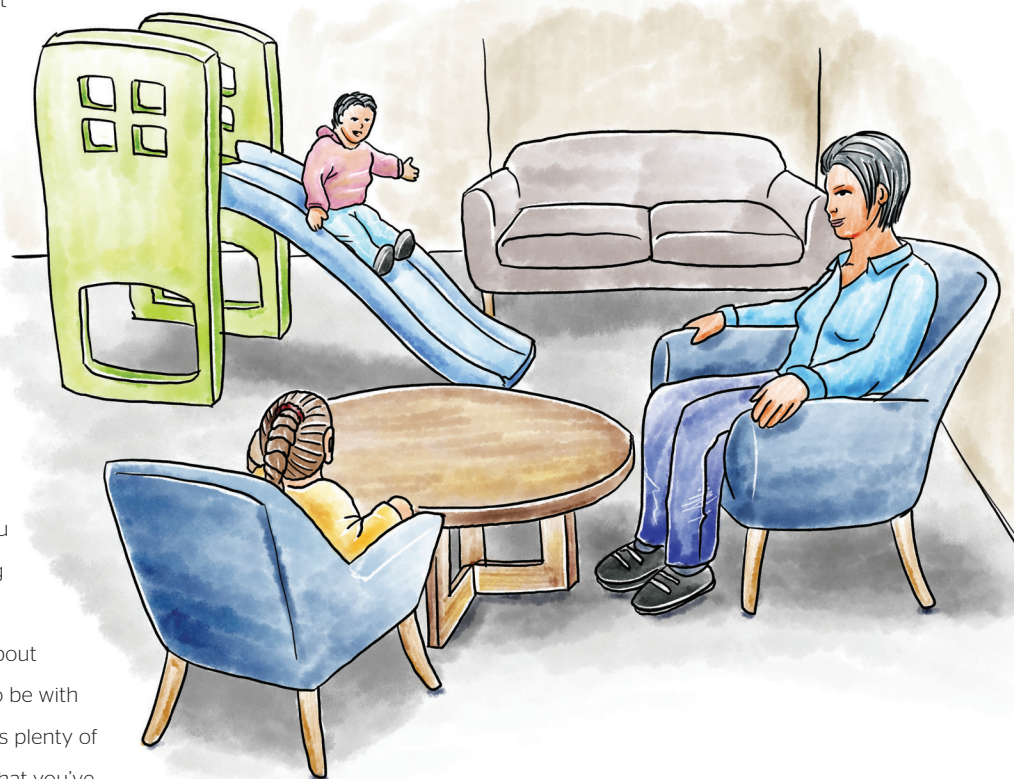
Prisons, like airports, schools and hospitals, have their own rules. The Corrections officers are there to help with the rules and answer any questions you have. These staff have a blue uniform, but they're not Police. *They will love it if you say Kia Ora to them!*

If you're early, or it takes your Mum some time to walk to the visit area, you may have a short wait until you see her. There are toys and books in the visits room so you don't need to bring any activities with you.

There are couches and armchairs in the visits room, you can snuggle with mum on a couch, or she can play or read with you on the couch / chairs or in the toy area.

You can also play with other children while Mum is chatting with her adults visitors. If you are not sure of anything you can ask a staff member. You'll have about one to two hours to be with your Mum, so there's plenty of time to talk about what you've been up to, and ask her questions.

If you need to go to the toilet during visits, you will have to go through the metal detector again before going back to your Mum.



You can leave at any time, and a Corrections officer will let you know when there is five minutes until the visit ends. When leaving you go back through reception, and out through the gates to the carpark, don't forget to pick up anything you have left in a locker.

**WE HOPE YOU HAVE
A GOOD VISIT WITH
YOUR MUM.**